



Celebrate the unexpected.

2019 SEASON | THE COLONIAL THEATRE

LIVE![®]
THE COLONIAL
Bethlehem New Hampshire

Box Office Information

CONCERT TICKETS may be purchased in advance at the Catamount Box Office, Eastern Ave, St. Johnsbury, VT; and at The Maia Papaya, Main Street, Bethlehem, NH, next to the Post Office (2 weeks prior each show while they last).

ONLINE at BethlehemColonial.org & tickets.catamountarts.org

The Colonial Patio is open for concerts an hour before showtime serving beer and wine for ticket holders.

We Show Movies Too!

Presenting the best in independent and world cinema.

SHOWTIMES: Saturday 5 (open caption when available) & 7:30, Sunday 1:30 & 7:30, Monday & Tuesday 7:30, Wednesday 5:30 Buddy Night, Thursday & Friday: Check schedule.

ASSISTED LISTENING HEADPHONES are available for movies free of charge at the concessions counter.

PARKING is available in the parking lot behind the Theatre and on both sides of Main Street and other locations nearby. See our web site for map.

HANDICAP PARKING is available directly in front of the Theatre at the concession area entrance and is also accessible to the patio.

KEEP UP TO DATE! Sign up for our email and get the latest concert and movie news, ticket information, and other cool stuff before everyone else at BethlehemColonial.org.

Support The Colonial!

The Colonial is able to bring world-class music, independent film and high quality family entertainment to the White Mountains because of support from people like you. Make a tax-deductible* donation by mail or online.

For every donation of \$500 or more a plaque acknowledging your donation may be put on a newly renovated theatre seat.

Every donation totaling \$250 or more includes a free individual or household membership.

DONATE ONLINE: To make a secure donation using your credit card or PayPal at bethlehemcolonialtheatre.org/donate, **OR BY MAIL:** Download the membership form and mail with your check, VISA, MasterCard, or Discover Card to:

The Colonial Theatre, PO Box 204, Bethlehem, NH 03574

Become a Sustaining Donor

An easy and a convenient way to maintain your membership and continuous support of The Colonial is to become a Sustaining Donor. It saves hundreds of dollars on postage, printing, and administrative costs. **Every sustaining donation of \$10 or more includes an Annual Membership for an individual or household!**

To make your sustaining contribution online, please visit: bethlehemcolonialtheatre.org/donate.

*The Friends of the Colonial is a non-profit 501(c)3 organization.



JOHN TULLY PHOTOGRAPHY

PAT METHENY Solo



THURSDAY, MAY 16, 8 PM
TICKETS: \$44, \$52, \$68:

It is one thing to attain popularity as a musician, but it is another to receive the kind of acclaim Metheny has garnered from critics and peers. Over the years, Metheny has won countless polls as “Best Jazz Guitarist” and awards, including three gold records. He has also won 20 Grammy Awards in 12 different categories including Best Rock Instrumental, Best Contemporary Jazz Recording, Best Jazz Instrumental Solo, Best Instrumental Composition. The Pat Metheny Group won an unprecedented seven consecutive Grammys for seven consecutive albums.

Sponsored by Polly's Pancake Parlor and The Rocks

Winner of 20 Grammy Awards, 36 Grammy Nominations, 3 Gold Records, and DownBeat Hall of Fame

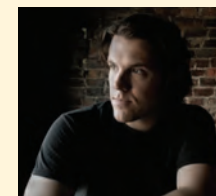
GHOST OF PAUL REVERE

with special guest
The Jason Spooner Band

FRIDAY, MAY 31, 8 PM
TICKETS: \$25, \$29, \$39

The Portland, Maine-based Ghost Of Paul Revere describes its sound as “holler folk,” not because it involves a lot of hollering, per se, but because it invokes the rich communal tradition of field hollers, with their call-and-response melodies, sing-along hooks, and densely layered harmonies. That sense of musical camaraderie is essential to everything The Ghost of Paul Revere does. They have shared stages with The Avett Brothers, The Travelin’ McCourys, Brown Bird, The Revivalists, the Infamous Stringdusters, and more.

“They possess not only the chops, but the heart to reach their audience and leave an undeniable impression.” —Boston Globe



THE JASON SPOONER BAND

Combining a unique blend of roots, folk and blues focused around Jason's tastefully rhythmic flat-picking style and the band's air-tight foundation including laid-back vocals and an emotive, image-rich writing style.

Sponsored by Moat Mountain Brewing

POLLY'S PANCAKE PARLOR

Now Open Year Round!

Made from Scratch
Pancakes, waffles, French toast, soups, sandwiches, quiche, ice cream, pies and more.
Open Daily 7 am

NEWLY RENOVATED!

1-93, Exit 38
672 Rte. 117
Sugar Hill, NH
603-823-5575



www.PollysPancakeParlor.com

Stay up to date on the latest events by signing up for our email newsletter at www.BethlehemColonial.org

THE Wayside INN & RESTAURANT

Restaurant Hours: Thursday–Monday, 5 PM–10 PM

3738 Main Street, Bethlehem, NH
Tel. (603) 869-3364
www.thewaysideinn.com





THE ROCKS

Take a step back in time at The Rocks

Nestled in the heart of the White Mountains, The Rocks is a scenic 1400-acre reserve offering woodland hiking trails, beautiful gardens, and stunning views of the Presidential Range.

- Maple Museum
- Hiking Trails
- Tours & Workshops
- Private Tours by request
- Fun activities for the whole family
- Tag your own Christmas tree
- Weddings & Events

THE ROCKS
4 Christmas Lane, Bethlehem, NH | 603-444-6228 | www.therocks.org

cold mountain C A F É

Farm to Table

“Every town needs a restaurant like this!”

HOURS: Monday through Saturday
Lunch 11 am–3 pm
Dinner 5 pm–9 pm

2015 Main Street, Bethlehem, NH • 603 869 2500
coldmountaincafe.com

AMOSKEAG BEVERAGES LLC

FEEL FREE TO BE
EST. 1982
WOODSTOCK INN BREWERY
NEW HAMPSHIRE, USA

MOAT mountain
BreWing ComPaNY
MouNT WashinGTON ValLEY

GREAT NORTH ALEWORKS
MANCHESTER NEW HAMPSHIRE

Switchback BREWING CO.


HARPOON
LOVE BEER. LOVE LIFE.

ALLAGASH
BREWING COMPANY

SAMUEL ADAMS

Miller Lite

Vacation Rental Management
with a Home in the Heart of New Hampshire's Franconia Notch & Western White Mountains



Offering Mountain Country Chalets & Vacation Rentals

Enjoy all the comforts of home on your next Franconia Notch vacation... and it's affordable! Call on us for all your Professional Vacation Rental Needs!

FRANCONIA Notch Vacations

1.800.247.5536
www.visitfranconianotch.com
287 Main Street • Franconia, NH 03580

BOMBINO

Grammy Nominee for Best World Music Album

For centuries, the desert town of Agadez has served as a converging point for the great camel caravans driven by the Tuareg that link West Africa with North Africa and the Mediterranean. Born in 1980 at a nomadic camp near this dusty outpost, the young guitarist and songwriter Omara "Bombino" Moctar was raised during an era of struggle for Tuareg independence and violent suppression by government forces. He was exiled from Niger over a decade ago after the government banned guitars. Bombino's electrifying jams capture the spirit of resistance while echoing with guitar riffs reminiscent of fellow Africans Tinariwen and Ali Farka Touré not to mention rock and blues icons such as Jimi Hendrix, John Lee Hooker and Jimmy Page.

Sponsored by Woodstock Inn Brewery

FRIDAY, JUNE 14, 8 PM
TICKETS: \$28, \$33, \$43



"An oasis of good-natured ribbing in a fiercely partisan world"
—The Washington Post

FRIDAY, JUNE 28, 8 PM
TICKETS: \$54, \$64, \$79

THE CAPITOL STEPS

The Capitol Steps are a troupe of Congressional staffers-turned-comedians who travel the States satirizing the very people and places that once employed them. The Steps perform over 500 shows a year all over the country.

The Capitol Steps were born December, 1981 when three staffers for Senator Charles Percy were planning

entertainment for a Christmas party. Their first idea was to stage a nativity play, but in the whole Congress they couldn't find three wise men or a virgin! So, they decided to dig into the headlines of the day, and created song parodies and skits which conveyed a special brand of satirical humor that was as popular in Peoria as it was on Pennsylvania Avenue.

Sponsored by Northern Lights Music, Peabody & Smith Realty, and Vermont Public Radio



MAKE MUSIC LOADING DOCK SHOWCASE

FRIDAY, JUNE 21, 7 PM
TICKETS: FREE

Make Music Bethlehem is a live, free musical celebration on June 21, the longest day of the year, with concerts on streets, sidewalks, and business along Main Street in Bethlehem.

This is a free celebration of music-making that takes place on the same day in more than 120 countries and 800 cities across the globe.

The Colonial in partnership with The Loading Dock will present 3 bands on our stage beginning at 7:00 PM. Featuring Treya Lam, Katie Matzell and The Reconstructed. Come to Bethlehem for a music filled day.

THE LOADING DOCK

/PERFORMANCE//ART//SPACE///

LIVE EVENTS

35 MILL STREET, LITTLETON
THELOADINGDOCKNH.COM



THE WAR AND TREATY

"joyous, gospel-style harmonizing with superb country-soul arrangements and powerful statements of devotion..."
—Rolling Stone

FRIDAY, JULY 5, 8 PM
TICKETS: \$17, \$20, \$24

A rising act in the Americana field, are a married duo Michael and Tanya Trotter, which have received comparisons to Ike and Tina Turner. Tanya (nee Blount) dueted with Lauryn Hill in Sister Act 2 and recorded sultry, mid-'90s R&B slow jams in a Toni Braxton vein. Michael sang in church, and during a tour of duty in Iraq, paid tribute to fallen comrades in song, before striking out as a smoothly seductive R&B singer-songwriter. Together they also drew inspiration from voices embraced as touchstones such as Ray Charles, Aretha Franklin, Johnny Cash and Nina Simone—and ultimately settled into a rootsy aesthetic animated by the range of their musical experiences with their five piece band.

Sponsored by White Mountain Appraisals, Russell Design Studio, MillerCoors

ONE CLICK CLOSER TO YOUR DREAM HOME.
A reputation for results.

PEABODY & SMITH REALTY
Residential & Commercial

Serving **NORTHERN, CENTRAL & The LAKES REGION** of New Hampshire

PeabodySmith.com

41st ANNIVERSARY
1978-2019

Northern Lights Music

Fine Acoustic & Electric Guitars and Accessories

Santa Cruz GUITAR COMPANY **Collings GUITARS** **Bourgeois Guitars**

Taylor GUITARS

57 MAIN STREET, LITTLETON, NH 03561 • 603-444-7776
northernlightsmusic.com

TARRNATION FLOWER FARM
specialty cut flowers & design studio

farm 96 Streeter Pond Road, Sugar Hill, NH 03586
tel 603.348.2223 email tarrnationfarm@gmail.com
www.tarrnationflowerfarm.com

Charles Slaughter PIANO SERVICES

ChuckSlaughter@NHpianotuner.com
www.NHpianotuner.com
603.726.4940
603.726.6147

James Walker & White Mountain Appraisals
are pleased to sponsor
The War & Treaty Live! at The Colonial

We believe the Colonial Theatre makes a vital and important contribution to our community and are proud to support this event.

We hope that others can support The Theatre in whatever capacity possible and ensure that this community treasure prospers.

white mountain APPRAISALS, INC
ACCURATELY APPRAISING
northern NEW HAMPSHIRE
SINCE 1986
whitemountainappraisals.com

HARRISON PUBLISHING HOUSE INCORPORATED

PO BOX 320 • 995 INDUSTRIAL PARK ROAD
LITTLETON, NEW HAMPSHIRE 03561
TEL 603 444-0820 • FAX 603 444-0826

HARMAN'S CHEESE & COUNTRY STORE
SUGAR HILL, NEW HAMPSHIRE

- “Really Aged” Cheddar Cheese
- Fine Gourmet Items
- Pure Maple Products
- Shipped Coast to Coast

1400 Route 117, Sugar Hill NH 03586
603-823-8000 • HarmansCheese.com

Open Daily: 9:30 am – 4:30 pm
(From November – April, Closed Sundays)

We educate students in a variety of art media, providing the space, tools, guidance, and encouragement they require to realize their potential. In doing so, we support the community beyond our doors as well, fostering a society where imagination and curiosity flourish.

LITTLETON STUDIO SCHOOL

23 Ammonoosuc St, Ste. 2 • Littleton, NH
(603) 444-1066 • littletonstudioschool.org

KELLOGG SURVEYING & MAPPING INC

GARDNER KELLOGG LLS 662

gk@kelloggsurvey.com
ph. 603-444-2252
mobile 603-616-7901

320 MANNS HILL ROAD LITTLETON, NH 03561

RUSSELL DESIGN STUDIO

Custom Logos, Brochures, Annual Reports, Signage, Packaging, Event Posters, Acoustic Panels

MARY ELLEN RUSSELL
603 991 2679 | russelldesignstudio.net



TICKETS: \$6 at the door
Group discounts available,
please call for information.

**WEDNESDAYS • 11 AM
JULY & AUGUST**

The Colonial's Summer Children's Series is anchored on alternate weeks by **The Weathervane Theatre's Patchwork Players**. Come enjoy the fun!

- July 3 Patchwork Players: Life on a Plate. By Miles Burns
- July 10 PREPOSTEROUS (a Happenstance clown circus)
A sophisticated, family-friendly, pocket-sized clown circus in which charming vintage clowns.
- July 17 Patchwork Players: The Adventures of Tommie Sawyer. By Valarie Speaks & Dale Jones
- July 24 Jason Tardy. A heady mix of high-energy juggling and crazy offbeat comedy.
- July 31 Patchwork Players: Billy Goats Gruff. By Miles Burns
- Aug. 3 Modern Times Theatre. "The Perils of Mr. Punch"
follows the troubles and travails of puppetry's favorite loudmouth, Mr. Punch.
- Aug. 14 Patchwork Players: Families are Like Fudge.
By 2019 Weathervane Interns & Marisa Kirby

Supported through a grant from the Nancy F. Vaughan Fund of the New Hampshire Charitable Foundation.

North Country Chamber Players

WHITE MOUNTAINS MUSIC FESTIVAL



"One of the outstanding cultural resources in the state of New Hampshire" — NH State Council on the Arts

MESSED UP!!! VIRTUOSO BACH

Award-winning violinist **Miho Saegusa** joins the Chamber Players in a joyous celebration of **Bach** concertos.

- JULY 13** 7:30pm Sugar Hill Meetinghouse, Sugar Hill
- JULY 14** 4:00pm Mountain View Grand, Whitefield

AMERICAN DREAMERS

A festive program of American masters including **Samuel Barber, Mark O'Connor** and **John Corigliano**.

- JULY 20** 7:30pm Sugar Hill Meetinghouse, Sugar Hill
- JULY 21** 4:00pm Mountain View Grand, Whitefield

BRANFORD MARSALIS: THE AGE OF GERSHWIN

Grammy-winning saxophonist **Branford Marsalis** plays **Gershwin, Ibert** and other favorites of the '30s.

- JULY 27** 7:00pm Medallion Opera House, Gorham
- JULY 28** 4:00pm Maplewood Golf Resort, Bethlehem

THE MIGHTY FIVE: ROMANCE TO REVOLUTION

A celebration of five iconoclastic 19th century champions of Russian music, featuring **Balakirev** and **Shostakovich**.

- AUGUST 3** 7:30pm Sugar Hill Meetinghouse, Sugar Hill
- AUGUST 4** 4:00pm Mountain View Grand, Whitefield

FAMILY OF GENIUS

Renowned violinist **Ayano Ninomiya** headlines this salute to **Felix & Fanny Mendelssohn** – siblings, soulmates and composers of genius.

- AUGUST 10** 7:30pm Sugar Hill Meetinghouse, Sugar Hill
- AUGUST 11** 4:00pm Mountain View Grand, Whitefield

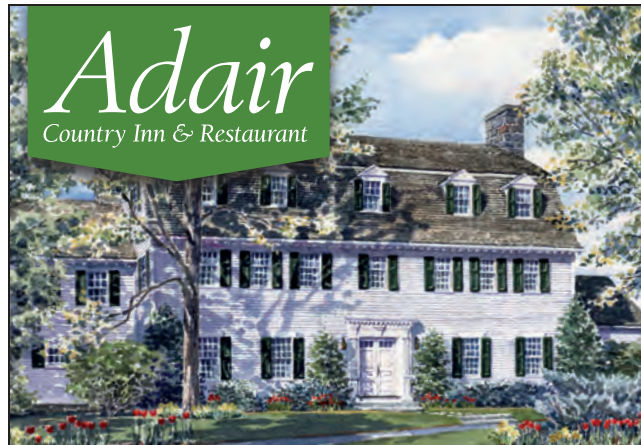
SOLERA QUARTET: METAMORPHOSIS

Our own **Miki-Sophia Cloud** and the much-heralded **Solera Quartet** return to perform **Strauss** and **Tchaikovsky**.

- AUGUST 17** 7:30pm Sugar Hill Meetinghouse, Sugar Hill
- AUGUST 18** 4:00pm Mountain View Grand, Whitefield

northcountrychamberplayers.org 603.444.0309

Adair
Country Inn & Restaurant



A perfect setting for any occasion

Whether you are celebrating a special occasion, or meeting family and friends, enjoy our award-winning cuisine and warm hospitality. Serving elegant dinner or casual fare in our intimate dining room, library lounge or garden-side patio.

Join us for dinner or cocktails Wednesday–Sunday
Thursday Date Night: 3 course dinner \$29 pp



A romantic retreat since 1927



The estate was a wedding gift to Dorothy Adair from her father in 1927

This lovely 200-acre estate is the perfect location to make your wedding or special event memorable for up to 120 guests. Featuring a fireplaced living and dining room, patio, and beautiful Olmsted gardens.

featuring...

11 unique rooms, full breakfast and afternoon tea, cozy fireplaces, garden and mountain views, near all White Mountain attractions.

80 Guider Lane, Bethlehem, NH • (603) 444-2600
(Exit 40 at the junction of Rte. 302 & I-93)
www.adairinn.com

WEATHERVANE THEATRE
WHITEFIELD, NEW HAMPSHIRE 03598 • 603-837-9322
JULY 6th through AUGUST 31st, 2019

See a different show almost every night!



YOUNG & WILSON, P.C.
ATTORNEYS AT LAW

Laura L. Wilson, Esq.

1033 Broad St, PO Box 87 | Lyndonville, VT. 05851

Now Licensed to Practice in New Hampshire!

(P) 802-626-5200
(F) 802-626-5260

www.lyndonlaw.com
www.ellewilsonlaw.com
llw@lyndonlaw.com

OPEN 7 DAYS A WEEK



**BREAKFAST
LUNCH
DAILY
SPECIALS**

30 Main St., Littleton, NH
next to Jax Jr. Cinema

Take Out Available
444-5722

RESTAURANT

SERVING YOU FOR OVER 39 YEARS!



THE QUEBE SISTERS

SATURDAY, JULY 20, 8 PM
TICKETS: \$20, \$24, \$28

Grace, Sophia, and Hulda Quebe front an innovative Progressive Western Swing band of archtop guitar, upright bass, fiddles and sibling harmony. The Dallas-based five-piece band presents a unique Americana blend of Western Swing, Jazz-influenced Swing, Country, Texas-Style Fiddling, and Western music. They're stripped-down acoustic instrumentation breathes new life into seasoned sounds once found in Texas dance halls and honky-tonks.

Sponsored by Scott Hunt

"The Quebe Sisters simply stopped me in my tracks... Their blend of swing with a dash of contemporary color is unique in today's music world. They project a cannonball of stage presence and man can they play." —Jimmy Buffet



CONSULTING SERVICES

Offering targeted capacity building services to focus and strengthen nonprofit organizations and businesses:

- strategic planning
- leadership development
- fundraising/revenue diversification

Proud to sponsor The Colonial's programs and mission:

Through relevant arts and cultural programming, we nurture the heritage and prosperity of the communities we serve.

Mary Lou Krambeer

603.444.0949 • maryloukrambeer@gmail.com
mlkandcompany.com



2 W Main Street, Littleton
603.444.2661
www.thebealhouse.com

Join us for dinner
before or after the show!

A Summer Evening with NATALIE MERCHANT

For A Summer Evening with Natalie Merchant, she will be joined by her longtime guitarist Erik Della Penna, with whom she has been playing for two decades; they will perform material from the past thirty-five years of Merchant's career. "I've reached a point in my career of wanting unique experiences on tour, of not settling for the predictable routing and venues. Last July, Erik and I had a very pleasant experience touring the United Kingdom as an acoustic duo. This Summer, we've decided to do a tour of New England following the same format, steering clear of big cities and playing unique and intimate venues in small, picturesque towns. I imagine we will meet many locals and visitors seeking the same sort of experience that we are and I expect the audiences and the settings will inspire us.



SATURDAY, JULY 20, 8 PM
TICKETS: **SOLD OUT**

Sponsored by White Mountain Shoes, MLK & Company, and Samuel Adams



WHITE MOUNTAIN

FOOTWEAR GROUP

www.whitemountainshoes.com



WHITE MOUNTAIN



RIALTO®

seven ★ dials

summit
by white mountain



VOLUNTEER PROFILE: Marilyn Johnson

When the Friends of The Colonial was formed in 2000, Marilyn Johnson was among the first to join. And being a Friend did not promise to be the proverbial walk in the park.

The building was dilapidated and there was an additional, disheartening event: Heavy snow collapsed the once-proud marquee, ignominiously bringing it down to block the entrance.

And its glory days were long gone.

But Marilyn and the other newfound Friends of The Colonial were committed to reviving the theater that had opened on July 1, 1915, showing Cecil B. DeMille's "The Girl of The Golden West."

Marilyn didn't see that movie, but it was a close call: She was born only seven years later.

Now 97, Marilyn has spent about two decades putting fiscal and human resources into helping The Colonial thrive as a center of culture and economy in the North Country.

Typically each Saturday for at least a decade she has finished up chores ranging from moving earth with her tractor to splitting wood at the home on Lewis Hill Road that her family bought in the 1850s, and then headed into town to volunteer at The Colonial.

She settled in behind the concession counter, made popcorn and hotdogs and sold candy and drinks.

She also adopted an innovative popcorn strategy now adored by butter lovers and probably Cabot Creamery. It involves filling the container halfway with popcorn, adding butter, filling it the rest of the way and topping it off with yet more butter.

Customers may remember her as the small, trim lady who urges them to use brewer's yeast on their popcorn, citing its health benefits—advice not to be taken lightly when coming from someone in her 90's who still hikes or snowshoes daily.

In 2015 when The Colonial launched a new and more aggressive plan to renovate and expand, Marilyn continued as strong supporter.

The New Hampshire Registry of Historic Places lists The Colonial and Yankee Magazine has named it the "Best Vintage Movie Theater." We'd like to nominate Marilyn as "Best Volunteer of any vintage!"

Watch for these on-going special film events

Anniversary Series

Beginning with our Centennial Celebration 3 years ago our Anniversary celebrates classic films with significant birthdays.

Curtain Call Films

Featuring all things musical from punk to opera.

Exhibition on Screen

Working with top international museums and galleries, EXHIBITION ON SCREEN create films which offer a cinematic immersion into the world's best loved art, accompanied by insights from the world's leading historians and arts critics.

Festival Fridays

Including the perennially popular Manhattan Shorts, this series features short film programs on a variety of subjects.

In Her Image

New this year, In Her Image, will revisit some of the acclaimed and (no surprise) overlooked achievements by women directors of the last 100 years.

REEL Outdoors

REEL Outdoors highlights the diversity of the outdoor experience. (See page 18 for the full season listing)

Spotlight Series

Shines a light on overlooked or underappreciated films.




LITTLETON Farmers Market

SUNDAYS 10 AM to 1 PM
June through October • Rain or Shine
CREDIT, DEBIT AND SNAP CARDS ACCEPTED


ON THE AMMONOOSUC RIVER
Littleton, New Hampshire

By the covered foot bridge at Littleton Area Senior Center, 77 Riverglen Lane



Something for everyone

The news you trust,
the programs you love



91.9 Littleton | nhpr.org

Let us help you... uncover new homeownership opportunities!



Passumpsic Savings Bank is here to help with all your home financing needs!

- Primary Residence
- Investment Properties
- Rural Development Guarantee Loans
- Second Home Loans
- Land Loans
- Housing Finance Agency Loans
- Construction Loans
- VA Loans

Talk to a mortgage specialist today!



Karen Covill | NMLS #653462
Lancaster, NH | (603) 788-4715
kcovill@passumpsicbank.com



Kimberly Doolan | NMLS #1633490
Littleton, NH | (603) 444-1738
kdoolan@passumpsicbank.com



Your Bank. Your Way of Life.

10 LOCATIONS IN THE NORTHEAST KINGDOM OF VT AND NORTHERN NH
 MEMBER FDIC passumpsicbank.com

Geo. M. Stevens & Son

Insurance Since 1882

We've Got You Covered ... *at Home, at Work, at Play*

Main Street Locations in

Lancaster	788-2555
Littleton	444-2911
Lisbon	838-6331
Colebrook	237-4788



1-800-675-2555
www.gms-ins.com

LITTLE VILLAGE

littlevillagetoyshop@gmail.com
littlevillagetoy.com

Toy & Book SHOP

Clare Brooks
Owner

603-444-4TOY (869)
603-444-1400 Fax

81 B Main St
Littleton NH
03561

14 2019 SEASON

BethlehemColonial.org 15

Reel Outdoors

2019 FILM SERIES



Filmed at the heart of the outdoor experience.

MAY 10 REEL ROCK 13

A collection of the year's best climbing films, delivering jaw-dropping action, soulful journeys and rollicking humor.

JUNE 7 THIS MOUNTAIN LIFE

A riveting examination of human passion set high in the peaks of British Columbia.

JULY 12 MAIDENTRIP

A 14-year-old sets out on a two-year voyage in pursuit of her dream to become the youngest person ever to sail around the world alone.

AUG. 2 THE WEIGHT OF WATER

A blind man embarks, alone in his own boat, into the home of the most iconic whitewater in the world, the Colorado River through the Grand Canyon.

SEPT. 13 WOMEN'S ADVENTURE FILM TOUR

A celebration of the fantastic women around us who are doing extraordinary things.

OCT. 11 INSPIRED TO RIDE & SHIFT

INSPIRED TO RIDE follows a handful of cyclists as they race unsupported in the inaugural year of The Trans Am Bike Race.

SHIFT is a half-hour documentary about the indigenous youth from the Yukon who spent 10 years converting traditional trails around their town in to a world-class mountain biking destination.

Sponsored by Rek-Lis Brewing, Appalachian Mountain Club, North Country Climbing Center, Carlson's Lodge, Jim & Carrie Hamblin, and The White Mountain School.



Local people. Local decisions.
Local bank.

In Littleton: 603-444-5237

Woodsville, Piermont, Lisbon, Littleton,
Lancaster, Plymouth, Franconia · Hanover
800-564-2735 · Member FDIC

thegarantybank.com

Pictured L-R: Amanda Arcone, AVP/Commercial Banking Officer, and Carol Walker, VP/Commercial Loan Officer.

Balance
everything.

THE HOT SARDINES

FRIDAY, AUG. 9, 8 PM

TICKETS: \$32, \$48, \$38

Fueled by the belief that classic jazz feeds the heart and soul, THE HOT SARDINES are on a mission to make old sounds new again and prove that joyful music can bring people together in a disconnected world.

These mischief-makers of hot jazz have been described as "potent and assured" (The New York Times). "Everything in our DNA is about connecting with the audience. That's where we feel most at home," says Elizabeth, of playing live with the eight-piece band (including one wildly percussive tap dancer).

Sponsored by Woodsville Guaranty Savings Bank, Vermont Public Radio, Great North Aleworks



"simply phenomenal" —The Times, London

RED BARAAT

FRIDAY, AUG. 23, 8 PM

TICKETS: \$25, \$30

*"The best party band in years."
—NPR*



Red Baraat is a pioneering band from Brooklyn, New York. Conceived by dhol player Sunny Jain, the group has drawn worldwide praise for its singular sound—a merging of hard driving North Indian bhangra with elements of hip-hop, jazz and raw punk energy. Created with no less a purposeful agenda than manifesting joy and unity in all people, Red Baraat's spirit is worn brightly on its sweaty and hard-worked sleeve. Their infectious rhythms roll over the audience like a hurricane and let the audience breathe only in a short ballad pause. It's here where Red Baraat does what it does best—commune with their audience in a joyful, near hedonistic celebration of music and dance.

Sponsored by Les Apple

BÉLA FLECK & ABIGAIL WASHBURN

SATURDAY, AUG. 31, 8 PM
TICKETS: \$59, \$69, \$85

Béla Fleck & Abigail Washburn have a musical partnership like no other. Béla Fleck is a fifteen-time Grammy Award winner who has taken the instrument across multiple genres, and Abigail Washburn a singer-songwriter and clawhammer banjo player who re-radicalized it by combining it with Far East culture and sounds. The two met at a square dance, began collaborating musically and eventually fell in love. Over the years, they played together most visibly in the Sparrow Quartet and informally at a pickin' party here, a benefit there, or occasionally popping up in each other's solo shows. Fans of tradition-tweaking acoustic fare eagerly anticipated that Béla & Abigail would begin making music together as a duo. Their deep bond, combined with the way their distinct musical personalities and banjo styles interact, makes theirs a picking partnership unlike any other on the planet.

Sponsored by P&S Equipment Rental, White Mountain Shoes, and Allagash Brewing

*"...the king and queen of the banjo"
—Paste Magazine*

GANGSTA GRASS

Bluegrass and Hip-Hop may sound like an odd combination, but don't tell that to Producer Rench, who birthed the fusion in 2006, with Gangstagrass. "There are a lot more people out there with Jay-Z and Johnny Cash on their playlists than you think," says Rench. He should know—he's toured the country with a band of bluegrass pickers and hip-hop emcees to the delight of standing room crowds everywhere.

With two emcees trading verses, a banjo, dobro, guitar, and frequent three-part harmonies, the Gangstagrass live show has garnered a reputation among fans for its dynamism and spontaneity.

Sponsored by Tami Nason, Vermont Public Radio, and Harpoon Brewing



SATURDAY, SEPT. 7, 8 PM
TICKETS: \$15 \$19

P&S Equipment & Rentals



· Lawn & Garden Equipment
Sales & Repairs

· Equipment Rental

· OEM Certified Service

Donald Lavoie, President

1091 MEADOW STREET
LITTLETON, NH 03561

tel 603.444.7028

cell 603.616.8992

email: donald@exit-41.com

www.pandsequipmentnh.com

*I am proud to support
The Colonial Theatre and to
celebrate the vital role it plays in
the cultural life and economic health
of the North Country.*

Tami Nason

What will your next act be?
Visit the Littleton Academic Center
and apply for your life's next
greatest performance.

Apply Today! Classes Begin
August 26th, 2019



White
Mountains
Community College

646 Union Street, Littleton, NH 03561

603-444-1326

wmcc@ccsnh.edu

wmcc.edu

Established 1945
We are Mittersill!
Mittersill Alpine Resort.
A four-seasons, destination resort.
A great vacation spot and family get-a-way!
Located in scenic Franconia Notch & the White Mountain National Forest.
Nearby Area Attractions - Hiking - Biking - Great Trails -
Golf - Zip Lines & Many Great Outdoor Adventures!
Baron's Pub at Mittersill Alpine Resort® Public Welcome - Strong Beer & Wine List Full Bar Food
Pf 1-93 Exit 34C | 193 Mittersill Road | Franconia, NH | 03580
T: (603) 823-5511 | F: (603) 823-5511
info@mittersillresort.com | www.mittersillresort.com
Celebrating 74 Years

Creative Financial Strategies, Inc.

"Putting All the Pieces Together"

kevin@creativefinancialstrategies.com

101 Cottage Street
Littleton, NH 03561

603-444-7035

800-639-2076

www.creativefinancialstrategies.com

Kevin M. O'Brien
President



START COFFEE.
MAKE TOAST.
Go Public.



VPR

VPR.org

npr



Home, Auto
Business, Life
& Health

Insurance & Financial Services

SERVING VERMONT & NEW HAMPSHIRE SINCE 1871

Hanover, NH • (603) 643-4540 • www.abgile.com



BUILDING ALTERNATIVES INC.
ENERGY EFFICIENCY SPECIALISTS

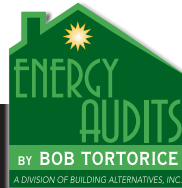
"Building Savings for a Lifetime" • Multiple Award-Winning Green Builder

BUILD

- **GREEN BUILDING (energystar)**
Custom Modular - Passive Solar Design - Log - Timberframe
Advanced 2x6 Framing - Structured Panels (SIPs) and more!
- **RENEWABLE ENERGY OPTIONS:** Solar - Geothermal - Wind

IMPROVE

- **THE BENEFITS OF AN ENERGY AUDIT INCLUDE...**
 - Solutions for mold, frost, drafty rooms, ice dams
 - A possible 25-50% savings on heating bills!
 - Make basement or attic a liveable space
 - Possible rebates for homeowners
 - Peace-of-mind for homebuyers



BuildingAlternatives.com
info@BuildingAlternatives.com
(603) 823-5100 Toll Free (877) 823-5101

**FINANCIAL STRATEGIES.
ONE-ON-ONE ADVICE.**

Kim R Shillieto
Financial Advisor

One Main Street
Littleton, NH 03561
603-444-0344

www.edwardjones.com Member SIPC

Edward Jones
MAKING SENSE OF INVESTING

ANAÏS MITCHELL

Anaïs Mitchell is a Vermont and Brooklyn-based singer-songwriter who comes from the world of narrative folksong, poetry and balladry. She recorded for Ani DiFranco's Righteous Babe Records before starting her own Wilderland label in 2012. Among her recorded works are six full-length albums, including 2010's sensationally-reviewed Hometown (which she performed at The Colonial that year), a folk opera based on the Orpheus myth; 2012's Young Man in America, which was described by the UK's Independent as 'an epic tale of American becoming'; and 2013's Child Ballads, a collaboration with Jefferson Hamer, which won a BBC Radio Two Folk Award. Mitchell has headlined shows worldwide as well as supporting tours for Bon Iver, Ani DiFranco, Patty Griffin, Josh Ritter and Punch Brothers. She was the winner of a Folk Alliance 2018 Spirit of Folk Award.



SUNDAY, SEPT. 29, 8 PM
TICKETS: \$17, \$20, \$24

Sponsored by Jim & Carrie Hamblin

"Terrific...Mitchell is a skilled storyteller...and her delivery gives an emotional complexity that welcomes and even demands repeated listens." —Pitchfork



MANHATTAN SHORT FILM FESTIVAL

**FRIDAY, SEPT. 27, 7:30 &
SATURDAY, SEPT. 28, 5:00 & 7:30**
TICKETS: \$8, \$10

Join us September 27th & 28th when over 100,000 film lovers in over 300 cities across six continents gather during one week in Cinemas, Museums and Universities for one purpose—to view and vote on the Finalists' Films in the 22nd Annual Manhattan Short Film Festival.

MANHATTAN SHORT is not a touring Festival; rather, it is an instantaneous celebration that occurs simultaneously across the globe, bringing great films to great venues and allowing the audiences to select their favorites. If the Film Festival experience truly is about getting great works in front of as many eyes as possible, MANHATTAN SHORT offers the ultimate platform—one that sees its films screened in Sydney, Mumbai, Moscow, Vienna, Cape Town to cinemas in all 50 states of the United States and beyond—and you are the judge!

IRIS DEMENT

with special guest Ana Egge

SATURDAY, OCT. 5, 8 PM

TICKETS: \$22, \$25, \$35

The youngest of 14 children, born in Arkansas and raised in Southern California, Iris DeMent spent her childhood immersed in gospel and traditional country music. Beginning with her 1992 debut, 'Infamous Angel,' which was hailed as "an essential album of the 1990's" by Rolling Stone, Iris DeMent released a series of stellar records that established her as "one of the finest singer-songwriters in America" according to The Guardian. The music earned her multiple Grammy nominations, as well as the respect of peers like John Prine, Steve Earle, and Emmylou Harris, who all invited her to collaborate. Merle Haggard dubbed her "the best singer I've ever heard" and asked her to join his touring band, David Byrne and Natalie Merchant famously covered her "Let The Mystery Be" as a duet on MTV Unplugged.

ANNA EGGE is a Brooklyn based-by-way-of North Dakota singer and songwriter. She sings, plays guitar, mandolin, bottleneck slide guitar and piano.

Sponsored by Mascoma Bank



*"A work of rare, unvarnished grace and power"
—The Boston Globe*



SATURDAY, OCT. 19, 8 PM

TICKETS: \$35, \$42

Grammy-nominated vocalist and all-acoustic orchestra from Cuba

ADONIS PUNTES & The Voice of Cuba Orchestra

Get ready for some hot Latin jazz! Adonis Puentes' rich, soulful voice is the perfect front for his all-acoustic orchestra, layering traditional Cuban rhythms with deep bass lines, jazzy horns, and his melodic guitar. A Grammy-nominated vocalist and composer from Cuba who weaves passionate, hypnotic Salsa and Cuban Son melodies through jazz arrangements, Puentes and the Orchestra create a worldly experience that is as emotive as it is danceable!

Sponsored by Elise Drake & Vermont Public Radio



Mascoma Bank

COMMUNITY FIRST
SINCE 1899

Different by design.

As a 110-year-old mutual bank and a Certified B Corporation®, Mascoma Bank is committed to being a force for positive change. We invite you to discover the difference banking with us can make.

888.627.2662

mascomabank.com



SUPPORT THE ARTS

ATTEND LIVE
PERFORMANCES

BRING A FRIEND

DONATE TO
THE COLONIAL THEATRE

with appreciation from a friend

Halloween Bash with KAT WRIGHT

THURSDAY, OCT. 31, 8 PM
TICKETS: \$21, \$25

Kat Wright, whose voice is both sultry and dynamic, delicate yet powerful; gritty but highly emotive and nuanced, has been described as "a young Bonnie Raitt meets Amy Winehouse". Add to that voice enough stage presence to tame lions, and the combination of feline femininity proves immediately enchanting. There's soul flowing in and out of her rock 'n' roll with a serpentine seduction. Some of soul music's sweet, grand dames belt, shout, seethe, and succumb, while Wright sings gently like a heartache's apology. It's funky in spots and beautiful all over. And it hurts a little... like it should.

Dressing up? You bet!

*Kat Wright brings her sultry voice back to
The Colonial on Halloween night!*

Sponsored by Chutters and Switchback Brewing



The Mulburn Inn
Mary Moritz • Innkeeper 2370 Main Street • Bethlehem, NH • 03574
www.MulburnInn.com (603) 869-3389 or 1-800-457-9440

Pure Energy
Hair Salon
Dottie Champagne
1990 Main Street
Bethlehem NH 03574
603.869.8074
pehs2012@yahoo.com
Full-service salon
Call now for your appointment.

Independent Since 1928

Our goals are to

- Reduce your insurance cost
- Reduce gaps in your coverage.

We work for you

Ask about our no-cost no-obligation review of your insurance

"for hard-to-find personal service"

Marshall Insurance Agency
Home • Auto
Motorcycles • Snowmobiles
Commercial Insurance
92 Main Street • Lancaster, NH
603-788-4657 • 1-800-649-4658 (NH/VT)
info@marshallinsuranceagency.com

marshallinsuranceagency.com

NEVER WASTE
A CHANCE TO *wander*

Bretton Woods

SCENIC LIFT RIDES - KIDS RIDE FREE!* • CANOPY TOUR
GOLF • SPA • BIKING • TENNIS • HORSEBACK RIDING
ATV TOURS • FINE & CASUAL DINING

Let the grand adventure begin at the legendary Omni Mount Washington Resort. Enjoy endless activities indoors and out. Public welcome.

800-258-0330
brettonwoods.com

*Up to two kids age 12 and under ride free with paying adult per day through 2019 summer season. Schedules and seasonal activities subject to change. Some restrictions may apply. Not available for groups. ©2019 Omni Hotels & Resorts

OMNI RESORTS
mount washington
new hampshire

**WZNC-LP 99.9 FM
Community Radio**

Broadcasting from the top of The Colonial Theatre
Bethlehem, New Hampshire

Local DJs, Local Programming

Listen on air at 99.9 FM
or online at nococommunityradio.org
www.facebook.com/WZNC.LP

**NORTH COUNTRY
GASTROENTEROLOGY**

Howard S. Mitz D.O.

**A Full Service Endoscopy
Office Infusion Therapy**

Dr. Mitz:

- Has served the health care needs of northern New Hampshire and Vermont for 19 years.
- Recognizes and is committed to the importance of quality and providing cost-effective services in a safe, comforting setting.
- Provides affordable and efficient care with no hospital overhead, no administrative bureaucracies, no competing institutional interests.
- Is devoted to pursuing and solving stomach and liver problems.
- Has a professional, pro-active, compassionate, caring staff.

**DR. HOWARD MITZ, D.O.
GASTROENTEROLOGY**
220 Cottage St, Littleton NH
(603) 444-0272



Meadowstone Farm

A leader in northern New Hampshire's local food movement for over a decade!

Offering fresh vegetables, pork, beef, eggs, goat cheese, berries, and much more.

Visit us at the farm stand, join a CSA, or look for our products at select stores throughout the North Country.

**FOOD WITH INTEGRITY.
GROWN WITH A PASSION.**

809 BROOK ROAD, BETHLEHEM, NH
603.444.0786 • MEADOWSTONENH.COM



Lawton Company

SINCE 1975

*Building Relationships
with Every Project*

COMMERCIAL / RESIDENTIAL

General Contracting
Construction Management
Custom Homes

603.444.0900

thelawtoncompany.com

FIND US ON:




14th Annual


COLONIAL THEATRE BENEFIT GOLF TOURNAMENT

Sponsored by Littleton Chevrolet

This benefit tournament raises funds to support programming and improvements to The Colonial—so please join us for an enjoyable day of golf and support The Colonial Theatre too!

SUNDAY, JULY 14
at The Maplewood Championship Golf Course
Bethlehem, NH

Pick up a Registration Form at The Colonial Theatre ticket window or online at bethlehemcolonialtheatre.org/golf-tournament

Mountain View Dental, PA
8 Clover Lane, Suite 2
Whitefield, NH 03598
(603) 837-9342
Bernd Weber, DDS
Roy D. Brewster, DDS
Mielle S. Fox, DMD
Ramona L'Heureux, DMD- Orthodontist
Our Family Caring for Yours
www.smilewise.net

Friday Afternoon Classical Concerts
5:00 PM
July 5, 19
August 2, 16, 30
Receptions Follow



Bethlehem Hebrew Congregation Sanctuary
39 Strawberry Hill, Bethlehem, NH

FILM FESTIVAL
July 11, 25
August 8, 22, 29
6:00 PM Reception
6:30 PM Guest Speaker
7:00 PM Film
Complimentary Food and Beverages for all Ticket Holders
Colonial Theatre
Main Street, Bethlehem, NH



Building Community Through the Arts ~ 2019
Sponsored by Bethlehem Hebrew Congregation
Program Details and Tickets: www.bethlehemsynagogue.org



Advertisers Index

A. B. Gile Insurance.....	22
Adair Country Inn & Restaurant.....	11
Amoskeag Beverages (and associated breweries)*	5
Bethlehem Hebrew Congregation.....	29
Building Alternatives.....	22
Charles Slaughter Piano Services.....	9
Chutters Candy Counter*	26
Coffee Pot Restaurant.....	11
Cold Mountain Café.....	4
Creative Financial Strategies.....	21
Edward Jones.....	22
Elise Drake*	25
Franconia Notch Vacations.....	5
George M. Stevens & Son.....	15
Harman's Cheese & Country Store.....	8
Harrison Publishing House.....	8
Kellogg Surveying & Mapping.....	8
Lawton Company.....	28
Little Village Toy & Book Shop.....	15
Littleton Farmers Market.....	14
Littleton Studio School.....	9
Marshall Insurance Agency.....	27
Mascoma Bank*	25
Meadowstone Farm.....	28
Mittersill Alpine Resort.....	21
MLK & Company*	13
Mountain View Dental.....	29
New Hampshire Public Radio*	15
North Country Chamber Players.....	10
North Country Gastroenterology.....	27
Northern Lights Music*	8
Omni Mount Washington.....	27
P&S Equipment & Rentals*	21
Passumpsic Savings Bank.....	15
Peabody & Smith Realty*	8
Polly's Pancake Parlor*	4
Pure Energy Hair Salon.....	26
Russell Design Studio*	9
Tami Nason*	21
Tarrnation Flower Farm.....	9
The Beal House Inn.....	13
The Loading Dock.....	6
The Mulburn Inn.....	26
The Rocks*	4
The Wayside Inn.....	4
Weathervane Theatre.....	11
White Mountain Appraisals*	9
White Mountain Footwear Group*	13
White Mountains Community College.....	21
Woodsville Guaranty Savings Bank*	18
WZNC LP Community Radio.....	27
Vermont Public Radio*	22
Young & Wilson Attorneys.....	11

*Live! at The Colonial Sponsor

Become A Sustaining Donor

An easy and a convenient way to maintain your membership and continuous support of The Colonial is to become a Sustaining Donor. It saves hundreds of dollars on postage, printing, and administrative costs. **Every sustaining donation of \$10 or more includes an Annual Membership for an individual or household!**

To make your sustaining contribution online, please visit: bethlehemcolonialtheatre.org/support.

*The Friends of the Colonial is a non-profit 501(c)3 organization.



JOHN TULLY PHOTO

MEMBER SPOTLIGHT: Kerri Harrington

How long have you been a member?

I've been a member as long as I've lived in this part of NH; so about 7 years.

Why did you become a member?

I became a member because when we moved to Bethlehem I automatically noticed the Colonial right away and knew I had to become a part of it. I took film courses in college and got really turned onto the beauty and power of motion pictures. Ever since then, I've been very interested in seeing films whenever I can.

As far as music, it's a huge part of my life now and has been since I was a child. I still pinch myself when I see folks coming to Bethlehem (Ani and Aimee and Natalie, oh my!)

And more broadly, putting my time and energy toward my community has always been important to me.

Do you have a favorite event(s) and why?

I think I have two favorite events so far. At Ani DiFranco I volunteered as security which is kind of funny because I would have had to use wit to push back the heavies.

But, luckily for me, I got to bump into Ani after the show and meet her. I've been a fan of her music for years, so that was a special moment for me.

The second special moment was during the film Captain Fantastic. There is an ending scene with an a cappella version of Sweet Child of Mine that is magical. I cried a super ugly cry and it was much needed. You should see it.

What do you like best about The Colonial?

I like so many things about the Colonial; comfy seats, real butter, top notch films and musical performances.

I just really love it all and I'm so glad it's in our neck of the woods!!

We're looking for more members like Kerri. Please join her in supporting The Colonial today!

Become a Member Today!

As a Colonial member you support great films, world-class music and entertainment, and quality family programming in the White Mountains.



BENEFITS INCLUDE:

- Discounts on all feature movies and most live events
- **Order LIVE! at The Colonial general admission tickets on-line with NO additional processing fees**
- **Members Mondays!** Get a free organic popcorn with your membership card
- A **FREE movie admission** for every 5 you attend
- Your house guests are welcome to all movies and live events at member's ticket prices when they accompany you to the Theatre
- The Colonial's Calendar of Events mailed to your home
- Weekly email with upcoming movies and events
- **Your Colonial membership will be honored with ticket discounts at Catamount Arts and KCP Presents, St. Johnsbury, VT; The Loading Dock and Upstage Players, Littleton, NH; St. Kieran Community Center for the Arts, Berlin, NH; Red River Theatres, Concord, NH; and member benefits at The Gem Theater, Bethel, ME. One membership, 7 venues!**
- **Your Colonial membership allows you to get member's prices at theaters across the country.** The Colonial is a participant in The **Art House Visiting Members Program** which allows members from participating theaters to visit any other participating theater and see a regularly scheduled film for the basic member discount. For a list of theaters visit: www.arthouseconvergence.org

Planned Giving

The Huntington Legacy Society was established in 2009, in memory of Steve Huntington, an enthusiastic supporter of The Colonial Theatre and respected civic leader. Steve was the first person to direct a legacy gift to the Theatre. The Huntington Legacy Society ensures the long-term financial sustainability for the Theatre and recognizes individuals who have included The Colonial in their estates. If you are considering a future gift to the Theatre and would like more information please call Stephen Dignazio, Executive Director, at 603-869-5603 or email gotoshow@BethlehemColonial.org. All inquiries are confidential.

Follow us [f](https://www.facebook.com/bethlehemcolonial) [i](https://www.instagram.com/bethlehemcolonial) [t](https://twitter.com/ColonialNH) [bethlehemcolonial](https://www.facebook.com/bethlehemcolonial) [@ColonialNH](https://twitter.com/ColonialNH)

JOIN US

SELECT MEMBERSHIP

- I would like _____ individual annual membership(s) at \$45 each
- or a household membership at \$90. Total number of household members _____

ADDITIONAL GIFTS TO THE COLONIAL

- I would like to support continued improvements and cultural programs with a tax deductible gift of:
- \$1000 \$500 \$250 \$100 \$50
- other \$ _____
- Any gift of \$250 or more includes a FREE individual or household membership

- Please keep my gift anonymous.

The Colonial Theatre is a 503(c)(3) non-profit organization

METHOD OF PAYMENT

Enclosed is my check for a total of \$ _____

Charge to my: Visa MasterCard Discover
 America Express

Card # _____ Exp. date ____/____/____ CSV _____

MEMBERSHIP INFORMATION

If you are currently a member, your membership expires on _____

Name _____

Mailing Address _____

City _____

State _____ Zip _____

e-mail _____
(to receive weekly updates)

I WOULD LIKE TO GIVE A GIFT MEMBERSHIP TO:

Name _____

Mailing Address _____

City _____

State _____ Zip _____

e-mail _____

Mail this form with your payment to:

THE COLONIAL THEATRE

PO Box 204, Bethlehem, NH 03574

or sign up online at www.BethlehemColonial.org

THE COLONIAL

Celebrate the unexpected.

MAIN STREET, BETHLEHEM, NH 03574

BethlehemColonial.org

THANK YOU TO OUR EVENT SPONSORS



Elise Drake
 Jim & Carrie Hamblin
 Scott Hunt
 Tami E. Nason

MEDIA SPONSORS:



PRESENTING PARTNER:



HOSPITALITY SPONSORS:



WITH ADDITIONAL SUPPORT FROM:



Neil and Louise Tillotson Fund, Melinda Richmond Fund, and Nancy F. Vaughan Fund of the NH Charitable Foundation
 Jane B. Cook 1992 Charitable Trust



New Hampshire State Council on the Arts